

Tomacado 花廚

設計者 | 梁築設計事務所 / 徐梁
參與者 | 周澤忠 孫永芳 王心妍 程萍萍 李晴 陸鑫
攝影者 | 孫駿 徐梁
空間性質 | 餐廳
坐落位置 | 中國
主要材料 | 微水泥、環氧水磨石
面積 | 97 坪
項目年份 | 2021 年

Designers | Liang Architecture Studio / Xu Liang
Project Team | Zhou Zesi, Sun Yongfang, Wang Xinyan, Cheng Pingping, Li Qing, Lu Xin
Photographer | Sun Jun, Xu Liang
Category | Restaurant
Location | China
Materials | cement, Epoxy terrazzo
Size | 320m²
Project year | 2021



將花朵的形態特色運用於空間中，闡述品牌的唯美初衷。

Tomacado 花廚位在上海繁華的浦東陸家嘴 IFC 國金中心。品牌創始人孔婕 (Karen) 曾負笈英國，學成歸國後投入金融產業，有感於當今都會女性在緊湊的生活節奏下，難有閒暇時光坐下來好好用餐，因此萌生開設一家餐廳的念頭；在她的構想裡，這座餐廳是隱身在都會水泥叢林裡的世外桃源，用鮮花與美食療癒人心，賓客在幸福愉悅的感官享受中，得以靜下心緒品嚐佳饌，為內在心靈充電。於是，一家以鮮花為主題的創新理念餐廳「Tomacado 花廚」應運而生，它以花店與餐廳的複合經營方式，來表達都會女子嚮往美好生活的不變主張，是珍愛自己，為自身創造愉悅時光，累積人生錦時的一座去處。



從女性視角出發

設計師提及，餐廳的目標客群鎖定於 80、90 後的都會女性，如何在喧囂環境裡打造一處隱於城市裡的世外桃源，透過女性視角尋思喜好與感受，是全作的著墨點。因建築自有條件佳，且空間開揚、擁有玻璃採光井，因此在結構加固下為室內作了局部挑空，並將旋梯配置在採光井下方。

此外，餐廳腹地呈現類扇形輪廓，扣除佔據約 1/3 的廚區與吧台後，餘有的 L 型餐區不適宜再劃分隔間，所以植入橢圓形的中島式餐區取代傳統包廂，半圍合的餐區外觀能減少服務視線死角，也正因它處於店內的中心點，順勢劃出了空間環繞式動線，令現場工作人員的服務節奏更加流暢。在照明計劃上，期望突顯柔美和煦的氛圍，讓挑高區灑落的天光，餐桌吊燈的重點照明以及硬體間接燈源，為滿室注入層次豐富的淡暈光色，敘述品牌的溫柔本質。

Xu Liang



徐梁
梁築設計事務所品牌創始人兼設計總監，2021 德國 iF 設計獎、2021 韓國 Asia Design Prize 亞洲設計獎金獎、2020 台灣 TID Award 金獎、2019 國家「光華龍騰獎」中國設計業十大傑出青年、2015 台灣 TID Award 金獎、2015 台灣 TID Award 年度新銳獎首位大陸設計師獲得者，也曾獲得美國、荷蘭、法國、義大利等國際獎肯定。徐梁善於運用建築的簡潔性，構造的清晰度和材質的純粹度創造新的美學載體，是理性與感性的重疊發生；致力於私人住宅及創新型商業空間的設計中，體現了對空間和生存價值的深度理解。

Xu Liang
Xu Liang is the founder & design director of Liang Architecture Studio. As a young interior architect, he has won multiple design awards at home and abroad, including iF Design Award 2021, Asia Design Prize 2021 (Gold Award), Taiwan Interior Design Award 2020, Dragon Design Foundation Award 2019, Taiwan Interior Design Award 2015 (Gold Award & "Interior Design in Next Generation" Award), and many other international awards held in the US, the Netherlands, France and Italy. Xu excels at utilizing simplistic architectural structures, clear layout and pure material palette as carriers to create unique aesthetics, which is a design process that combines sensibility and logic. He strives to give people penetrating insights into the value of space and living through his design practices in private residences and commercial spaces.

1. 運用旋梯連接天地，構築一座律動且柔美的空間。2. 外觀，利用花瓣的形態建立了外立面與品牌精神的關係。

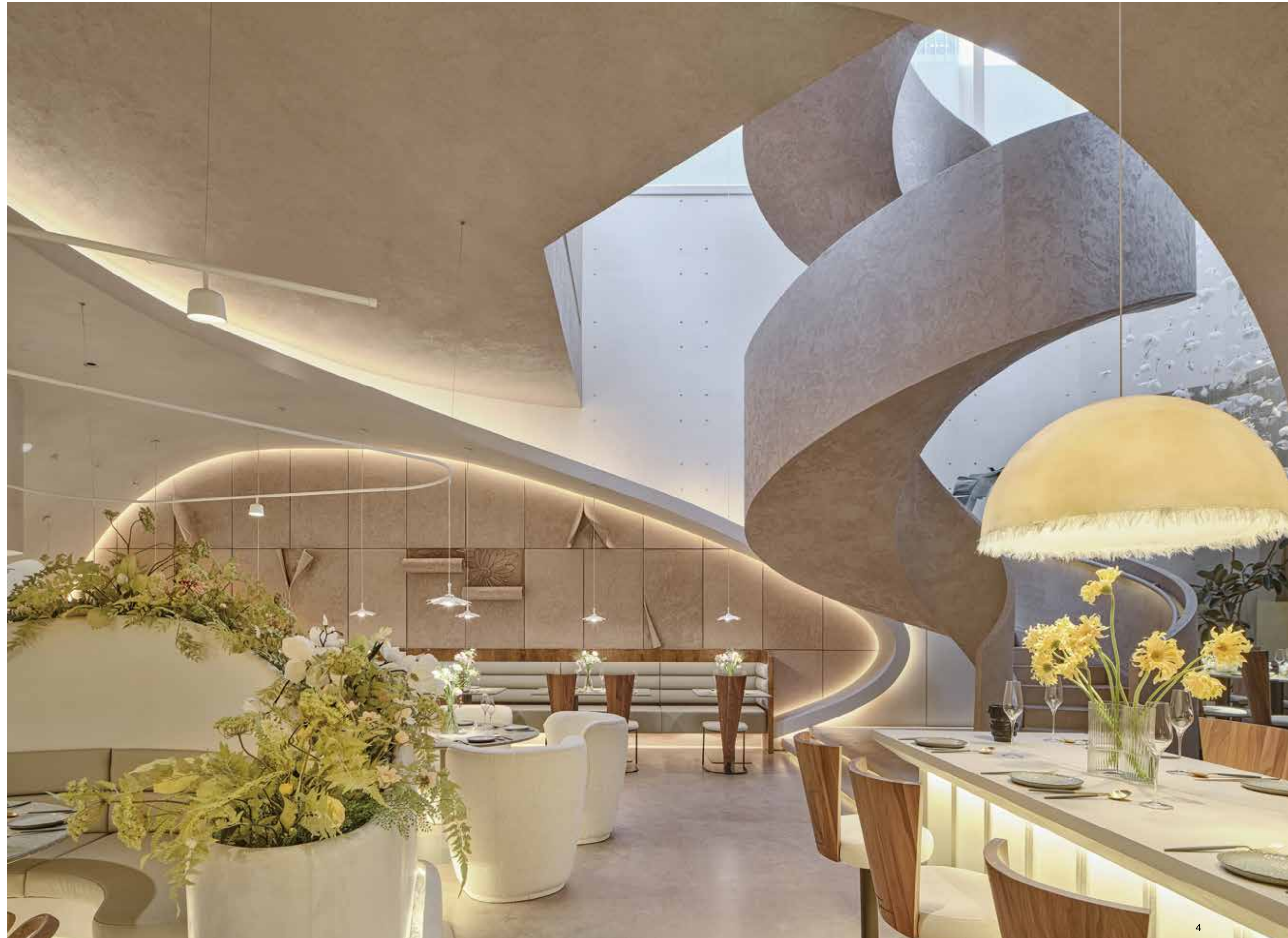
1. A spiral staircase is a dynamic sculpture, elegant in shape and structure. 2. A flower petal gives a strong visual impression from the exterior.

以花朵作為線索

設計師期望透過簡潔建築、清晰構造以及純粹材質來建構整體美學。在此作，花的自然形態與美麗被視為空間與品牌連結的線索，設計師解構花形線條並運用於全作，令餐廳裡外硬體都圍繞著「花是美 廚是愛」之概念，不斷向賓客傳達品牌精神與獨特魅力。

在外觀上，浮雕花朵豐富了外立面的表情，花瓣般的線條勾勒出景框，讓人隱約探望室內動態。而餐廳內部，利用石膏雕塑放大了花瓣形態，逐一融入於硬體造型之中，除了用來增添浪漫氛圍，實質上也修飾了管道與設備，或是借著柔曲線條為來客引導動線。全作在細節上處處緊扣花朵，花卉從桌面裝飾、物體裝飾、天花板裝置都一一表達不同的美感姿態，同時自然植物區也盡可能編在有自然光照射的位置，讓植物能更長久的生長與維護。另一細節亮點，是設計師特意選用上海市花—白玉蘭作為室內裝置的主要花材，標誌了餐廳據點與所在城市之關係。而全案選材上也使用簡單材質來構造所有的形體，以灰白色水泥鋪陳空間主基調用以襯托鮮花之美，柔曲的形體線條連接了各個場域，在滿室的純粹感與柔和光照中更加深了餐廳的唯美氛圍，一如品牌設立的美好初衷。採訪 | 室內雜誌編輯部

3. 吧台區提供輕鬆小酌的交誼場域。4. 通過物體造型巧妙的引導動線。
3. The bar is a very cozy venue for social gathering. 4. Orientation system is guided by objects standing in a visual hinge.





blur the interface or make it more playful. Space and objects complement each other, and gives each other greater value.

The designers integrated the natural form and beauty of flowers into the space through deconstruction techniques. The overall space is full of floral aesthetics, which echoes the brand's concept of conveying beauty and love and meanwhile brings new experiences. Beautiful and elegant magnolia denudata, as the city flower of Shanghai, turns into a floral art installation at the staircase space. The blooming "flowers" embrace sunlight, showing a graceful aesthetic and a dynamic posture. The unique irregular structural forms build a close connection between people and the space. The exterior of the restaurant draws on the form of petals, and the plaster reliefs on it vividly present floral forms. The circulation subtly leads to the depth of space, generating a romantic atmosphere and allowing guests to enjoy the play of natural light and shadows.

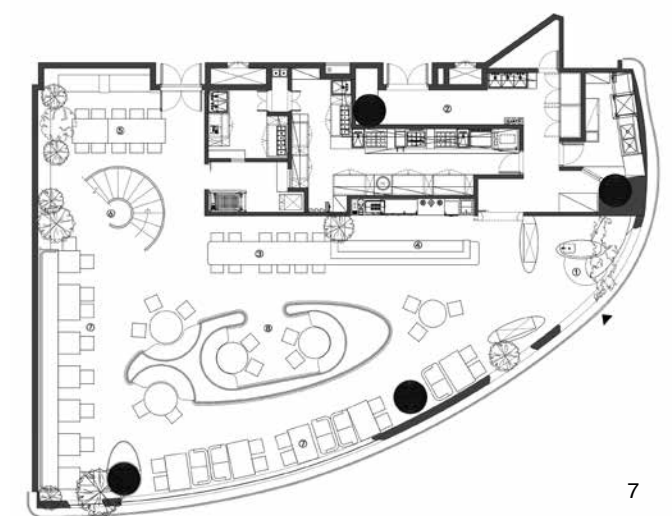
Grayish white cement sets the main spatial tone, and highlights the beauty of flowers. The curved structures link distinct functional areas. The textures of the space and structures are simple but expressive. The designers intended to create the atmosphere by integrating materials, space and light, instead of defining style. The aesthetics of the space is demonstrated by simplistic structures, clear composition and pure textures. The design team hoped to showcase the beauty of flowers to the greatest extent possible through design techniques, combine the design with modern urban lifestyle, fuse space, flowers with food and show guests the unique charm of Tomacado. Text by Liang Architecture Studio

5. 空間裡花卉佔有較大比重，桌面裝飾、物體裝飾、頂面裝置等都展現花朵之美。6. 利用天窗採光讓空間展現自然光影的變化。7. 平面圖。8. 使用灰白色水泥作為主基調來襯托鮮花之美。9. 花的形態是貫穿全作空間的靈感與線索。10. 燈帶輔助了空間照明，同時強調著空間柔曲的線條造型。
5. Flowers dominate the design of the furnishing objects. 6. Skylight offers the space a fantastic light. 7. Plan. 8. Exposed cement surface is the basic color tone of the interior. 9. Flowers inspired the design concept of the restaurant. 10. Lighting both from natural and artificial sources energizes the space.

"Since the pace of life is very fast in the city, we hope Tomacado is a place where people can slow down to enjoy life. Tomacado is like a 'flower', after five years' cultivation it becomes a restaurant that represents a lifestyle. Through the cooperation with designers, we wish to create a gorgeous environment in simple life." — Karen, Tomacado Founder

People who live fast-paced lifestyle in the city are increasingly aspiring for an undisturbed place where they can slow down to enjoy life and comfort the restless soul. Tomacado provides a destination that combines catering services with flower shop, expecting to create a "heaven of peace" isolated from the noisy city.

The spatial design of the restaurant is based on the designers' thoughts of architecture and objects. The design team believes that space is formed by objects, so objects are the basis of functions, and also carriers of the circulation route. The structural relationship between objects and physical vectors can visually bring a strong sense of rhythm to the space, and can also help





11. 自然植物的布局位置重視易於照顧與維護。12. 位於腹地一隅，半開放的包廂空間，可用於小型活動之用。13. 柔曲的樓梯造型，令空間顯得溫柔，更符合女性的視角與喜好。14. 上海市花白玉蘭作為樓梯空間的主花藝表現，在天光照拂下宛若向陽而生。
 11. Plants are placed in a certain position where they are easily provided daily maintenance. 12. Half open lounge can host small events. 13. Curving staircase is gentle and elegant. 14. White magnolia is the major flower arranged along the staircase.

建材分析 Material Analysis

1. 選材首要考慮是方便餐廳的日常運營，在材質選擇重視實用性與好保養。
 2. 西班牙微水泥大面積用在牆面、天花板以及樓梯的表皮，材質耐磨、防污且方便施工，適宜餐廳管理的打理和維護。
 3. 地面使用環氧水磨，耐用且易於清理。
1. The material used in the restaurant are easy to maintain and fit daily pragmatic requirements. 2. Spanish cement is used to cover the partitions, ceiling and staircase surfaces. 3. Epoxy is used to pave the entire floor

溝通重點 Communication Note

1. 餐廳目標客群鎖定於 80、90 後的都會女性，希望為她們打造一處舒心宜人的享食之處。品牌以花卉寄寓美好內涵，因此空間元素與構造都與品牌精神相關，將花朵的自然形態與美感作為貫穿全作的線索，讓空間裡外都圍繞著花是美，廚是愛，是一切美好的開始。
 2. 以花朵為靈感的前提下，使用簡單的材質來構造形體，用柔美的線條表達空間的唯美特質。
1. Restaurant customers are mostly young ladies in their twenties or thirties, and they love intimate comfort and enjoy floral arts. The restaurant has a strong visual hint taken from flowers both real or design graphics. 2. Flower is an image used in the restaurant extensively; furnishing objects were built to represent floral biological formation.